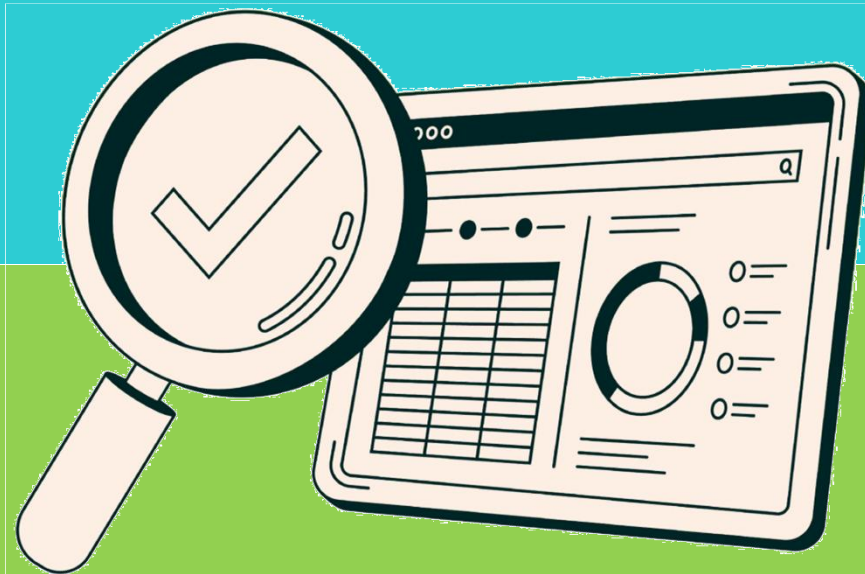


OnCue Transport Limited Carbon Reduction Plan

Report Period: September 2024 – August 2025

Report Date: 20-11-2025

Powered By: **pulse**
net zero software



Carbon Reduction Plan September 2024 - August 2025

This report has been produced by **Trident Utilities Ltd** using Pulse Net Zero accounting platform for **OnCue Transport Limited**.

Company Overview

Non-Emergency Patient Transport Provider

Year Incorporated	2021
Industry	Other human health activities
No. of Staff	44
No. of Offices	2
No. of Production Sites	-
No. of Company Vehicles - Trucks	-
No. of Company Vehicles - Other	265

Reporting Period

September 2024 - August 2025

Net Zero Commitment Date

2045

Benchmark Year

September 2020 - August 2021

Reporting Boundary

Operational

Qualification & Reporting Methodology

This report has been created in line with the government PPN 006 framework requirement. Aligning with the 2023 procurement Act

Emissions have been calculated following the GHG Reporting Protocol - Corporate Standard and using the UK Government Greenhouse Gas Reporting Conversion Factors relevant to the reporting period where available. Where emissions, without published conversion factors have been used, these have been determined by Pulse Net Zero in consultation with relevant stakeholders and any industry standards.

Optional Scope

Emissions from Scope 1 & 2 have been measured in accordance with PPN 006 requirements. Having looked at our emissions upstream and downstream transportation are not relevant. The Scope 3 emissions that have been included are:

- Waste Generated from Operations
- Business Travel
- Employee Commuting

Intensity Measurement

The reported intensity metric is gross emissions in tonnes CO₂e per Vehicles as this best reflects business activity. The intensity measurement will be reported each year, with a comparison made against the previous year's performance.

Carbon Reduction Plan September 2024 - August 2025

Emissions Summary

Emissions (tonnes CO ₂ e)	Baseline Year - 2020	Reporting Year - 2025
Scope 1	819.5	1,177.1
Gas (Company Facilities)	9.6	0.8
Vans (Company Vehicles)	809.9	1,176.3
Scope 2	4.7	0.9
Electricity (Purchased Energy)	4.6	0.9
Gas (Purchased Energy)	<0.1	0.0
Scope 3	3.6	12.0
Upstream Transportation & Distribution	N/A	N/A
Waste Generated from Operations	0.3	0.5
Business Travel	2.6	7.0
Employee Commuting	0.6	4.5
Downstream Transportation & Distribution	N/A	N/A
Total Emissions	827.7	1,189.9

*N/A - Not applicable, CNR - Category not reporting

Emissions from the baseline are up significantly since the baseline due to the number of vehicles being operated. The emissions per vehicle are down 19% year on year.

Baseline Emissions

The baseline year is September 2020 - August 2021.

The baseline year emissions represent the amount of greenhouse gases that would have been emitted under a 12-month business-as-usual scenario. The baseline is the reference point for OnCue Transport Limited to both measure and manage their greenhouse gas emissions going forward.

OnCue Transport Limited will recalculate the baseline year if any substantial organisational change or restructuring occurs.

The total emissions for the baseline year are 827.7 tonnes CO₂e with 0.43% arising from Scope 3.

Current Emissions Reporting

OnCue Transport Limited's carbon emissions for the reporting year September 2024 - August 2025 amounted to 1,189.9 tonnes CO₂e.

Carbon Reduction Plan September 2024 - August 2025

Methodology

Scope 1 and 2 greenhouse gas emissions have been calculated using the Environmental Reporting Guidelines: including Streamlined Energy and Carbon Reporting (SECR) Requirements issued by the UK Government in March 2019. Emissions have been calculated using the UK Government Greenhouse Gas Reporting Conversion Factors relevant to the reporting period. Scope 2 emissions have been calculated using the location-based approach.

Scope 3 emissions have been calculated following the methodologies detailed in the Greenhouse Gas Protocol Technical Guidance for Calculating Scope 3 Emissions.

Where available, emission factors were sourced from the annual Greenhouse gas reporting: conversion factors from the Department for Energy Security and Net Zero and Department for Business, Energy & Industrial Strategy. Where a spend-based methodology was used, emission factors were sourced from the UK Government "Conversion factors kg CO₂ per £ spent, by SIC code".

The CO₂e emission factor has been utilised throughout.

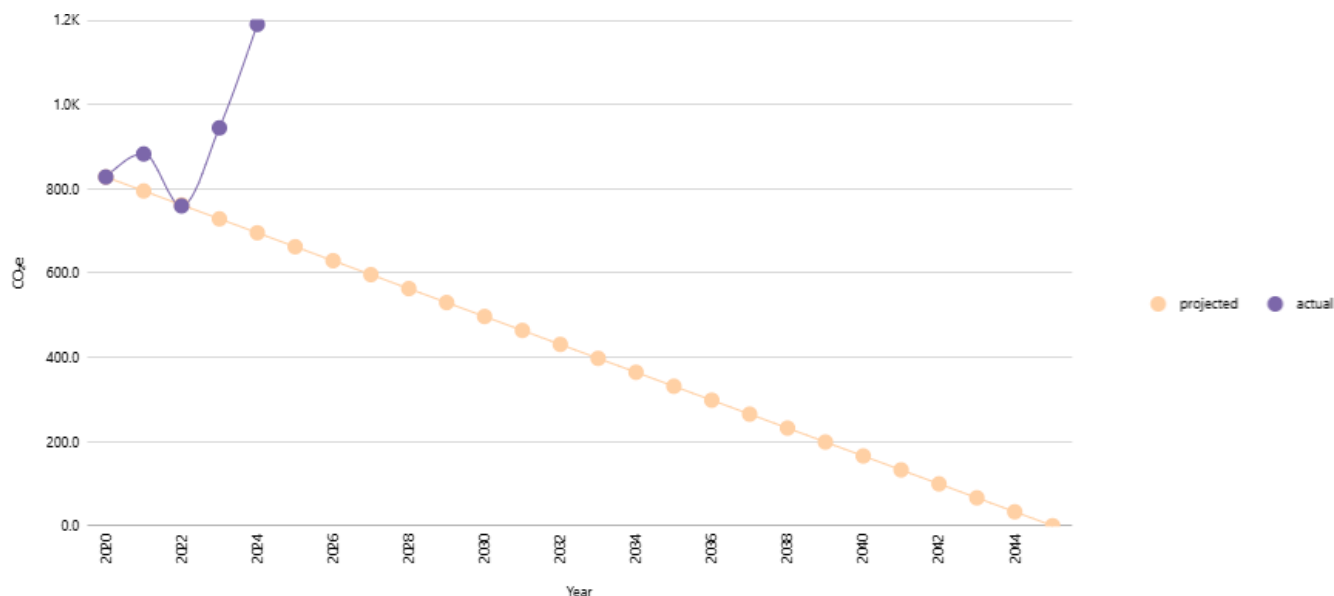
Emissions Reduction Targets

In order to continue progress to achieving Net Zero, OnCue Transport Limited have adopted the following carbon reduction targets.

OnCue Transport Limited is committed to achieving Net Zero emissions by 2045.

In addition to the Net Zero Target OnCue Transport Limited have committed to an ambitious 80% reduction by 2036

Carbon Reduction: Projected vs. Actual



Carbon Reduction Plan September 2024 - August 2025

Carbon Reduction Projects

The following environmental management measures and projects have been completed or implemented since September 2020 - August 2021 baseline.

- Maintained ISO 14001:2015 certification, reaffirming our commitment to full environmental regulatory compliance and the enhancement of our sustainability practices.
- We are committed to a phased transition to Ultra Low Emission Vehicles (ULEVs) and Electric Vehicles (EVs), prioritising high-use urban routes where emissions impact is greatest.
- Idle Reduction Systems: Vehicles automatically reduce idling during stops, cutting CO₂ and NOx emissions.
- All non-electric vehicles are ULEZ-compliant, ensuring our fleet meets the highest emissions standards.
- Adoption of intelligent vehicle technologies that actively reduce emissions and improve fuel efficiency.
- Ongoing driver behaviour monitoring and training, focused on eco-driving techniques to minimise environmental impact.
- We have carried out an Air Quality Impact Assessment as part of the development of our vehicle depot to ensure we meet and surpass the local and London-wide planning policies and the NPPF.
- OnCue operates as a paperless organisation, reducing waste and improving efficiency across our business.
- Our premises are equipped with energy-saving measures, including LED lighting, automatic light timers, power kill switches, low-flow water fixtures, and water-efficient toilets.
- All offices support waste segregation, with comprehensive recycling facilities available to all staff.
- Eco-printing protocols are in place across all sites, with default settings for reduced energy and toner use, plus weekly reports to monitor consumption.
- Environmental policies, procedures, and staff training are continuously reviewed and updated to reflect current best practice in sustainable and ethical operations.
- Sustainability Champions embedded across the organisation, driving engagement and improvement at all levels.
- Remote meetings are encouraged and widely adopted, reducing unnecessary travel and lowering our carbon footprint.

Carbon Reduction Plan September 2024 - August 2025

Declaration and Sign Off

This Carbon Reduction Plan has been completed in accordance with PPN 006 and associated guidance and reporting standard for Carbon Reduction Plans.

Emissions have been reported and recorded in accordance with the published reporting standard for Carbon Reduction Plans and the GHG Reporting Protocol corporate standard and uses the appropriate Government emission conversion factors for greenhouse gas company reporting.

Scope 1 and Scope 2 emissions have been reported in accordance with SECR requirement, and the required subset of Scope 3 emissions have been reported in accordance with the published reporting standard for Carbon Reduction Plans and the Corporate Value Chain (Scope 3) Standard.

This Carbon Reduction Plan has been reviewed and signed off by the board of directors (or equivalent management body).

Signed on behalf of OnCue Transport Limited:

Name: Torsten Brose

Position: Chief Executive Officer

Signature: 