

# PPN 06/21 Carbon Report



September 2023 - August 2024

Report Author: Phil Batten

Report Date: 10-12-2024

Prepared By:



Powered By:



This report has been produced by **Trident Utilities Ltd** using Pulse Net Zero accounting platform for **OnCue Transport Ltd**

## Company Overview

Non-Emergency Patient Transport Provider

Year Incorporated	2021
Industry	Other human health activities
No. of Staff	44
No. of Offices	2
No. of Production Sites	-
No. of Company Vehicles - Trucks	-
No. of Company Vehicles - Other	265

## Reporting Period

September 2023 - August 2024

## Net Zero Committed Date

2024

## Benchmark Year

September 2020 to August 2021

## Reporting Boundary

Operational

## Qualification & Reporting Methodology

This report has been created using the Environmental Reporting Guidelines, including Streamlined Energy & Carbon Reporting (SECR) guidance issued by the UK Government in April 2019.

Where they exist, Pulse Net Zero uses the UK Government published carbon conversion factors relevant to the reporting period. Where emissions, without published conversion factors have been used, these have been determined by Pulse Net Zero in consultation with relevant stakeholders and any industry norms or standards that exist. The details of these are included in the Data Declaration section of this report.

## Net Zero History

Yes

## Optional Scope

Emissions from Scope 1&2 have been measured in accordance with SECR requirements. The Scope 3 emissions that have been included are:

- Employee Commuting - Cars
- Employee Commuting - Bus
- Employee Commuting - Rail
- Employee Commuting - Cycling
- Waste Generated from Operations - Waste - Tyres
- Waste Generated from Operations - Waste - Batteries
- Waste Generated from Operations - Waste - Mineral Oil
- Waste Generated from Operations - Waste - Clothing
- Waste Generated from Operations - Waste - WEEE - mixed
- Waste Generated from Operations - Waste Disposal
- Waste Generated from Operations - Water Treatment
- Business Travel - Cars
- Business Travel - Motorbike
- Business Travel - Rail
- Business Travel - Vans

## Emissions Summary

tonnes CO <sub>2</sub> e	20-21 Baseline	21-22	22-23	23-24 Reporting Year
<b>Scope 1</b>	<b>819.47</b>	<b>872.91</b>	<b>740.26</b>	<b>879.69</b>
<b>Scope 2</b>	<b>4.66</b>	<b>4.27</b>	<b>5.25</b>	<b>2.43</b>
<b>Scope 3</b>	<b>3.59</b>	<b>4.81</b>	<b>13.61</b>	<b>13.94</b>
Employee Commuting	0.61	0.59	1.54	4.75
Waste Generated from Operations	0.33	0.19	3.96	0.46
Business Travel	2.65	4.03	8.11	8.73
<b>Total (Scope 1, 2 and 3)</b>	<b>827.72</b>	<b>881.99</b>	<b>759.12</b>	<b>896.06</b>

## Immediate Carbon Reduction Priorities

The need to take immediate and bold action on climate change is being increasingly recognised by businesses, government and the general population. OnCue Transport Ltd recognises that its activities have an impact on the environment and are committed to minimizing any adverse impact wherever practical

OnCue Transport Ltd have aligned their Carbon Reduction Plan with Science Based Targets and are working to both mitigate the emissions it has already identified and to ensure that further emissions, not already measured, have a clear plan to support discovery and action. We have aligned our long-term pathway to Net Zero with the NHS target for Carbon Footprint Plus of Net Zero by 2045, with an ambition to reach an 80% reduction by 2036 to 2039.

OnCue Transport Ltd is an established and trusted MedTech business specialising in the provision of care-led, reliable, and scalable Patient Transport Services (PTS). We average over 14,000 NHS patient journeys every week transporting patients to and from hospitals, clinics, and GP appointments in London and across the UK.

The immediate priorities of the company to drive down its Climate Impact are:

To meet NHS England's NEPT Vehicle Decarbonization Timeline of 75% of the fleet used to transport patients would be the latest Ultra Low Emission Vehicles (ULEV) standard by 2026. It is anticipated that by 2026 our fleet will have increased to approximately 345 vehicles, it is anticipated that 44% of the fleet will be the latest Ultra Low Emission Vehicles (ULEV) standard. By managing the mix of vehicle types used for each contract, we should be able to meet NHS England's NEPT Vehicle Decarbonization Timeline.

As part of our Carbon Reduction Priorities, we will continue to replace the existing Euro 6 diesel standard with ULEV standard vehicles to further reduce our carbon emissions and continue to evaluate Zero Emission Vehicles (ZEV) and Alternative Zero Emission Vehicles, and the infrastructure required to deliver an effective PTS and will become an early adopter of Zero Emission Vehicles (ZEV) when suitable vehicles become available.

## Scope 1 & 2 Emissions

	<b>Scope 1 - Direct Emissions</b>	<b>879.69 tonnes CO<sub>2</sub>e</b>
---	-----------------------------------	--------------------------------------

Emission Type	Unit	Volume	tonnes CO <sub>2</sub> e
Gas	kwh	22,265.12	4.1
Vans	miles	3,827,707	875.58
<b>Total</b>			<b>879.69</b>


	<b>Scope 2 - Indirect Emissions</b>	<b>2.41 tonnes CO<sub>2</sub>e</b>
---	-------------------------------------	------------------------------------

Emission Type	Unit	Volume	tonnes CO <sub>2</sub> e
Electricity (Grid)	kwh	10,939	2.27
Gas	kwh	801.11	0.15
<b>Total</b>			<b>2.41</b>

## Scope 3 Emissions - Analysis by Reporting Category

	<b>Scope 3: Category 5 - Waste Generated from Operations</b>	<b>0.46 tonnes CO<sub>2</sub>e</b>
---	--	------------------------------------

Type of waste	Unit	Volume	tonnes CO <sub>2</sub> e
Waste Disposal	tonnes	3.58	0.08
Water Treatment	m3	240.5	0.05
Waste - Tyres	tonnes	9.717	0.21
Waste - Batteries	tonnes	2.852	0.06
Waste - Mineral Oil	tonnes	2.783	0.06
Waste - Clothing	tonnes	0.285	0.01
Waste - W E E E - Mixed	tonnes	0.074	0
<b>Total</b>			<b>0.46</b>

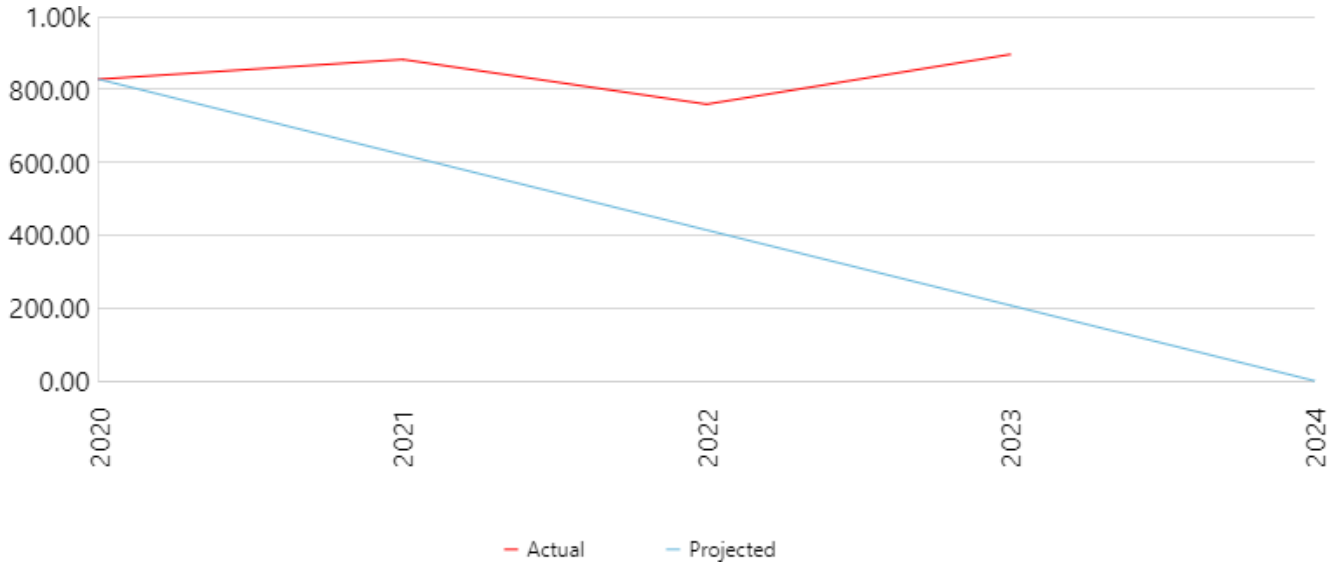
	<b>Scope 3: Category 6 - Business Travel</b>	<b>8.73 tonnes CO<sub>2</sub>e</b>
---	--	------------------------------------

Emission Type	Unit	Volume	tonnes CO <sub>2</sub> e
Cars	miles	34,800	7.05
Vans	miles	3,276	0.75
Motorbike	miles	5,100	0.93
<b>Total</b>			<b>8.73</b>

**Scope 3: Category 7 - Employee Commuting****4.75 tonnes CO<sub>2</sub>e**

Emission Type	Unit	Volume	tonnes CO <sub>2</sub> e
Cars	miles	18,696.95	4.24
Bus	km	3,399.24	0.27
Rail	km	8,781.6	0.24
Cycling	miles	777.63	0
<b>Total</b>			<b>4.75</b>

## Carbon Reduction: Projected vs. Actual



## Carbon Reduction Projects

### Completed Carbon Reduction Initiative

The following environmental management measures and projects have been completed or implemented since the 2020 baseline. The carbon emission reduction achieved by these schemes equate to -68.34 tonnes CO<sub>2</sub>e, an 8.26% reduction against the 2020 baseline and the measures will be in effect when performing the contract.

The following environmental management measures and projects have been completed or implemented since the 2020 baseline.

- OnCue Transport Ltd have implemented an ISO 14001 Environmental Management System on all of our projects.
- We have replaced all the lighting in our head office with LED lighting.
- We have implemented a new expenses form which more stringently checks internal business travel. This allows us to track the make, model, engine size and fuel type of vehicles used as well as the number of miles covered and incentives to reduce employee commuting by encouraging staff to use public transport or cycle to work.
- We have implemented a paperless office policy which has significantly reduced the amount of paper toner cartridge use and wastage.
- We have encouraged customers and suppliers to reduce face-to-face meetings by adopting the use of video calling and reducing travel.
- We have completed an Air Quality Impact Assessment as part of the development of our vehicle depot to ensure we meet and surpass the local and London-wide planning policies and the NPPF.

## Energy & Other Efficiency Projects

### Completed projects

Site	Country	Project	Emissions Impacted	Annual Reduction	CO <sub>2</sub> e Impact
All Sites	UK	Replaced company cars with hybrid vehicles	Scope 3 - Business Travel	3.761tonnes CO <sub>2</sub> e	44% decrease

## In process projects

Site	Country	Project	Emissions Impacted	Annual Reduction	CO <sub>2</sub> e Impact
All Sites	UK	Phase 1 – Introduce fleet of Ultra Low Emission Vehicles (ULEV) in place of current Euro 6 diesel standard vehicles*  *Phase 1 – Introduction of initial 10 ULEVs	Scope 1 - Direct Emissions	18.9 tonnes CO <sub>2</sub> e	57% decrease

## Declaration and Sign Off

This Carbon Reduction Plan has been completed in accordance with PPN 06/21 and associated guidance and reporting standard for Carbon Reduction Plans.

Emissions have been reported and recorded in accordance with the published reporting standard for Carbon Reduction Plans and the GHG Reporting Protocol corporate standard and uses the appropriate Government emission conversion factors for greenhouse gas company reporting.

Scope 1 and Scope 2 emissions have been reported in accordance with SECR requirement, and the required subset of Scope 3 emissions have been reported in accordance with the published reporting standard for Carbon Reduction Plans and the Corporate Value Chain (Scope 3) Standard.

This Carbon Reduction Plan has been reviewed and signed off by the board of directors (or equivalent management body).

## Signature

Signed on behalf of OnCue Transport Ltd

Name: Torsten Brose

Position: Chief Executive Officer

Signed: 

Signed on behalf of Pulse Net Zero

Name: Chris Wilson

Position: Snr Consultant Engineer

Signed: 