



Cabinet Office

Carbon Reduction Plan

Supplier name: OnCue Transport Ltd

Publication date: 15th March 2024

Commitment to achieving Net Zero

OnCue Transport Ltd is committed to achieving Net Zero emissions by 2045.

Baseline Emissions Footprint

Baseline emissions are a record of the greenhouse gases that have been produced in the past and were produced prior to the introduction of any strategies to reduce emissions. Baseline emissions are the reference point against which emissions reduction can be measured.

Baseline Year: 2020/2021

Additional Details relating to the Baseline Emissions calculations.

OnCue Transport Ltd is an established and trusted MedTech business specialising in the provision of care-led, reliable, and scalable Patient Transport Services (PTS). We average over 10,000 NHS patient journeys every week transporting patients to and from hospitals, clinics, and GP appointments in London and across the UK.

Globally, there has never been a more critical time to act on climate change and every business has a role to play. OnCue Transport Ltd has stepped step up in the fight against climate change, reduced emissions and move with confidence towards a Net Zero future.

We have aligned our long-term pathway to Net Zero with the NHS target for Carbon Footprint Plus of Net Zero by 2045, with an ambition to reach an 80% reduction by 2036 to 2039.

Baseline emissions are a record of the greenhouse gases that have been produced in the past and were produced prior to the introduction of any strategies to reduce emissions. Baseline emissions are the reference point against which emissions reduction can be measured.

Base Year

The base year is September 2020 – August 2021. Measurements include mandatory scope 1, 2, and 3 emissions. Estimates have been made with the collation of data.

Baseline year emissions: 2020/2021

EMISSIONS	TOTAL (tCO ₂ e)
Scope 1	819.47 tonnes.
Scope 2	4.56 tonnes.
Scope 3 (Included Sources)	4. Upstream Transportation & Distribution: Not applicable 5. Waste Generated in Operations – 0.4 tonnes. 6. Business Travel – 2.6 tonnes 7. Employee Commuting – 7.4 tonnes. 9. Downstream Transportation & Distribution: Not applicable
Total Emissions	834.43 tonnes.

Current Year Emissions Reporting

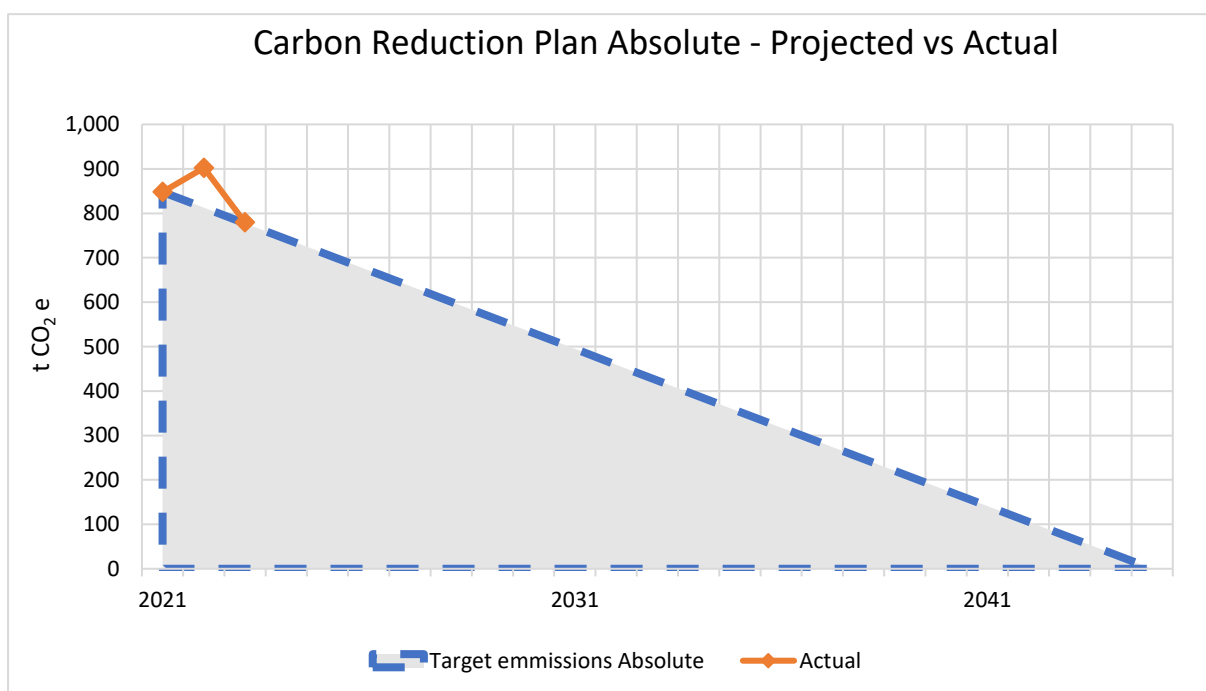
Reporting Year: 2022/2023	
EMISSIONS	TOTAL (tCO ₂ e)
Scope 1	740.26 tonnes.
Scope 2	5.1 tonnes.
Scope 3 (Included Sources)	4. Upstream Transportation & Distribution: Not applicable 5. Waste Generated in Operations – 6.5 tonnes. 6. Business Travel – 8.2 tonnes. 7. Employee Commuting – 13.9 tonnes. 9. Downstream Transportation & Distribution: Not applicable
Total Emissions	773.96 tonnes.

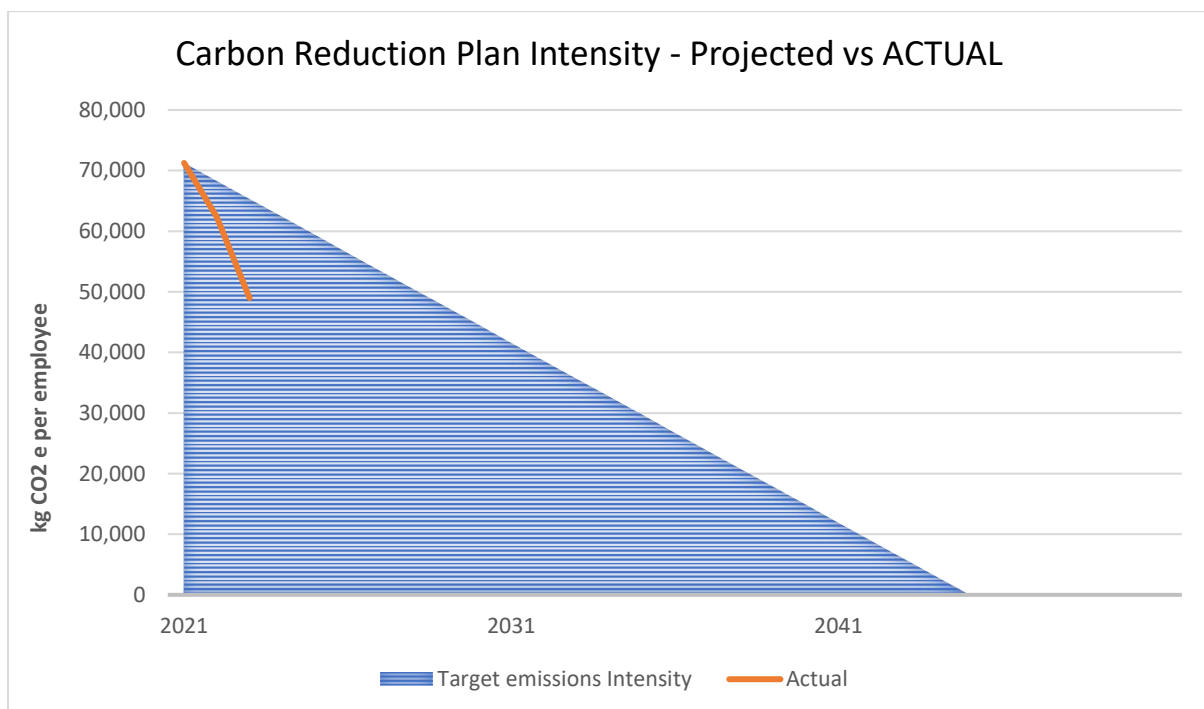
Emissions reduction targets

In order to continue our progress to achieving Net Zero, we have adopted the following carbon reduction targets.

Our total emissions increased from 834.43 tCO₂e in 2020/21 to 887.96 tCO₂e in 2021/22 and then fell to 773.96 tCO₂e in 2022/23. The initial increase is largely as a result as a result of increased business activity and resulting ambulance fleet and employee numbers. Turnover increased from £6.1m in 2020/21 to £9.4 in 2021/22 and £11m in the latest F/Y and employees from 20 to 38 in the same periods. The CO₂e intensity ratio (kg CO₂e/employee) has reduced from 71,263 kg CO₂e/employee to 48,976 kg CO₂e/employee, a reduction of 31%.

Progress against these targets can be seen in the graphs below:

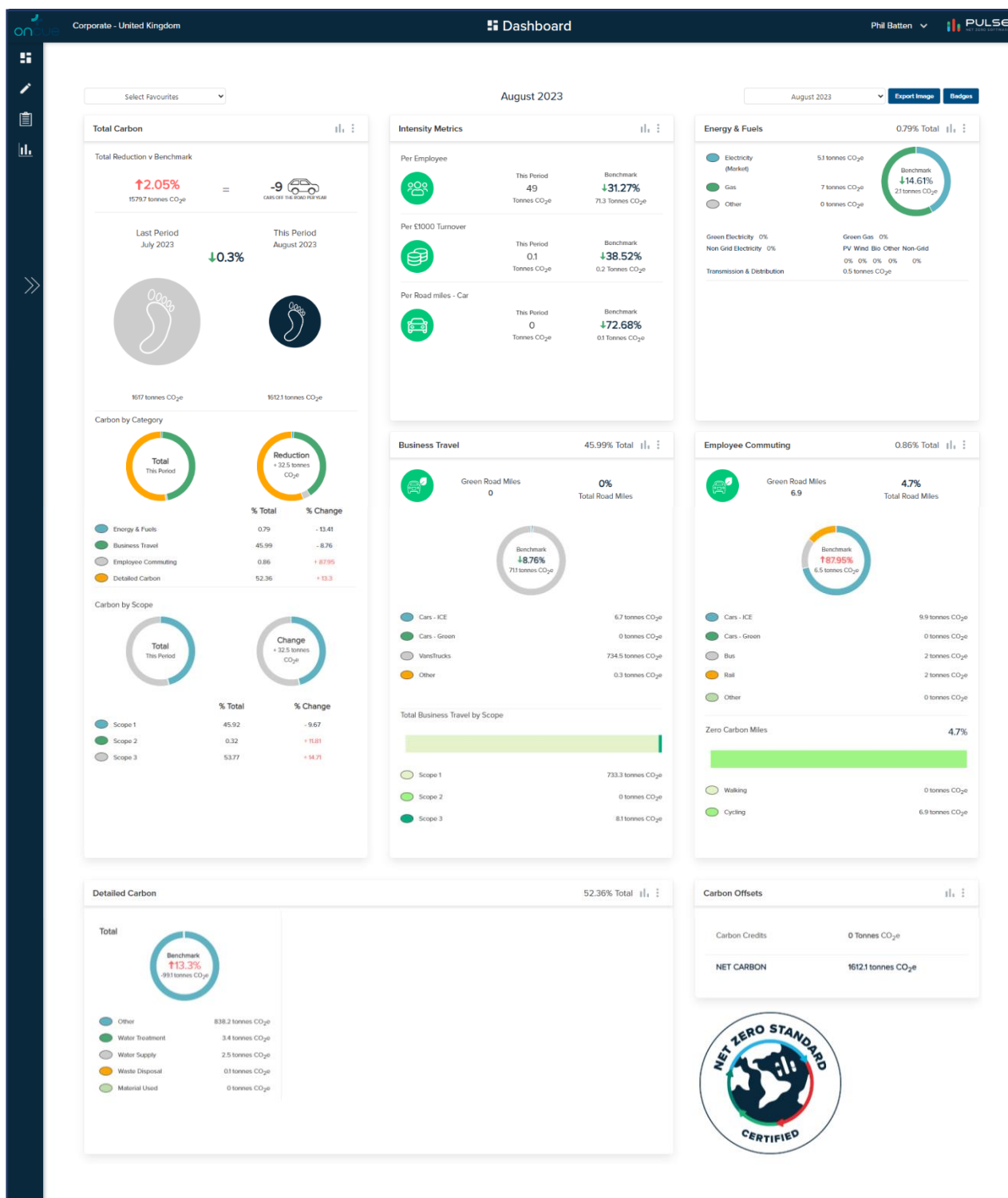




Completed Carbon Reduction Initiatives

The following environmental management measures and projects have been completed or implemented since the 2020 baseline.

- OnCue Transport Ltd have implemented an ISO 14001 Environmental Management System on all of our projects.
- We have replaced all lighting in our head office with LED lighting.
- We have implemented a new expenses form which more stringently checks internal business travel This allows us to track the make, model, engine size and fuel of type of vehicles used as well as the number of miles covered and incentives to reduce employee commuting by encouraging staff to use public transport or cycle to work.
- We have replaced all company cars with electric vehicles.
- We have implemented a paperless office policy which has significantly reduce the amount of paper toner cartridge use and wastage.
- We have encouraged customers and suppliers to reduce face to face meetings by adopting use of video calling and reducing travel.
- We have recently carried out an Air Quality Impact Assessment as part of the development of our vehicle depot to ensure we meet and surpass the local and London-wide planning policies and the NPPF.
- We have started using Carbon Accounting software to map our Carbon Footprint and record emissions on a monthly basis in order to track improvement. This is indicated by the dashboard below:



Future carbon reduction projects include:

- Ensuring our entire fleet of ambulances meet the current minimum Euro 4 (NOx) emission standards. In order to continue our progress to achieving Net Zero our ambulance fleet will be replaced once the sector has collected enough real-life data to inform the future rollout of zero-emission non-emergency patient transport ambulances.
- We will continue to assess whether we can go 'green' on our gas & electricity provider/tariff across all OnCue sites.
- Work in collaboration with our partners to lower their emissions for non-emergency patient transport by combining and optimising patient journeys.

- Conduct a travel audit to identify viable and realistic business travel reduction opportunities.
- An in-depth review of all waste streams across all OnCue sites.
- A review of water usage across all OnCue offices.
- Maintaining a balance between working from home and attending office.
- Continuing to attend the majority of the meetings remotely, keeping business travel to a minimum.

Declaration and Sign Off


This Carbon Reduction Plan has been completed in accordance with PPN 06/21 and associated guidance and reporting standard for Carbon Reduction Plans.

Emissions have been reported and recorded in accordance with the published reporting standard for Carbon Reduction Plans and the GHG Reporting Protocol corporate standard¹ and uses the appropriate Government emission conversion factors for greenhouse gas company reporting².

Scope 1 and Scope 2 emissions have been reported in accordance with SECR requirements, and the required subset of Scope 3 emissions have been reported in accordance with the published reporting standard for Carbon Reduction Plans and the Corporate Value Chain (Scope 3) Standard³.

This Carbon Reduction Plan has been reviewed and signed off by the board of directors (or equivalent management body).

Signed on behalf of OnCue Transport Ltd:



Torsten Brose
Chief Executive Officer
Date: 15th March 2024

¹<https://ghgprotocol.org/corporate-standard>

²<https://www.gov.uk/government/collections/government-conversion-factors-for-company-reporting>

³<https://ghgprotocol.org/standards/scope-3-standard>